

X2 Spider

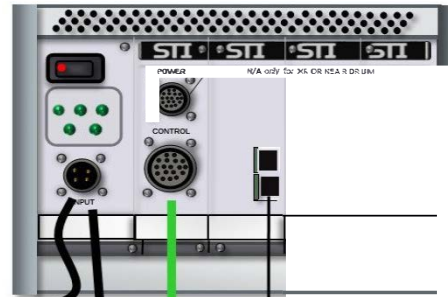
Quick Start Guide for X2 Spider System (Tank Inspection)



SCANTECH

Tank inspection

Back view of controller



Power supply

Joystick cable

BPS Battery power system

Software key

laptop

Ethernet cable

Front view of controller

Dual channel model is shown. If you own a dual channel it is important to put the UT in the top two slots.



If the controller is more than one system capable, this area will have a touch screen, make sure to choose X2 before using the system

UT line

Main umbilical cable

Main cable

Water tubing outlet

X2 joystick

Water line

WS3 water supply

Water tubing inlet

Water storage

Water line must be hooked to the bottom brass barb!
Dual transducer shown/ single also could be used

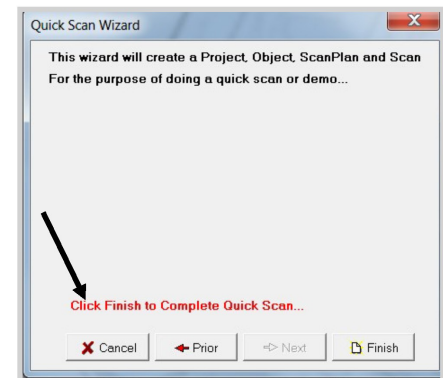
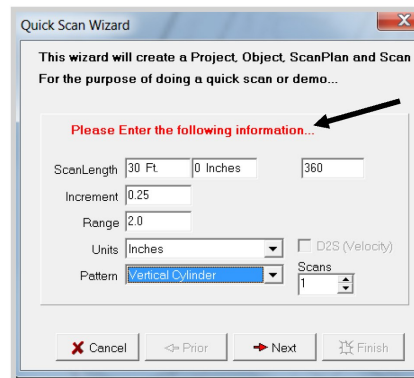
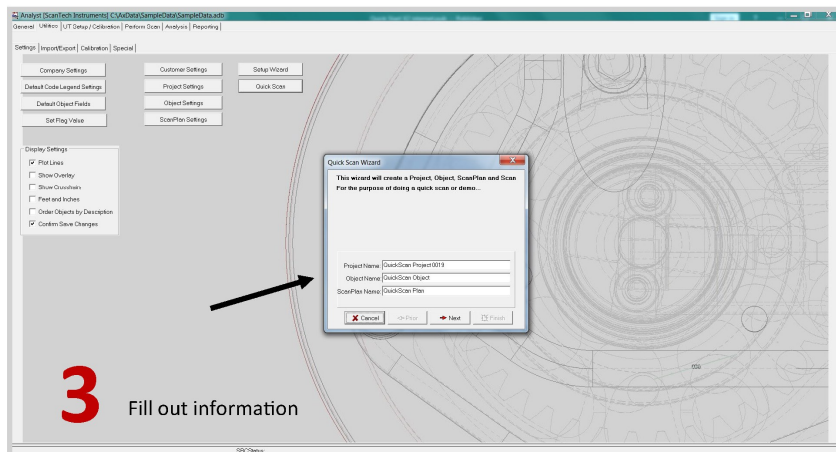
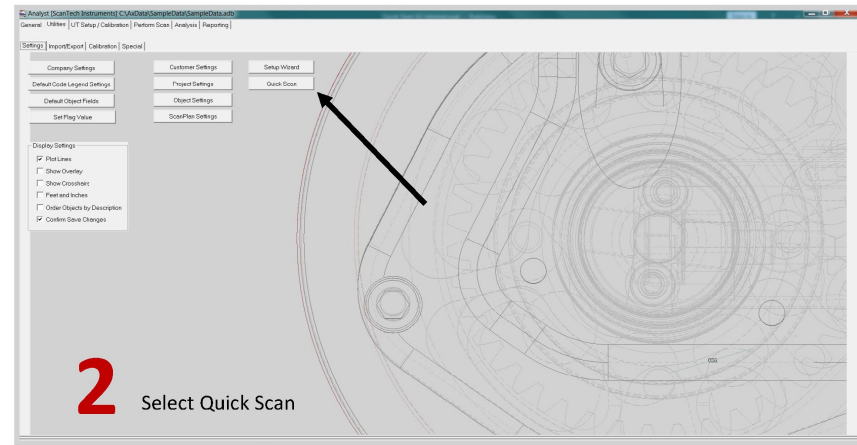
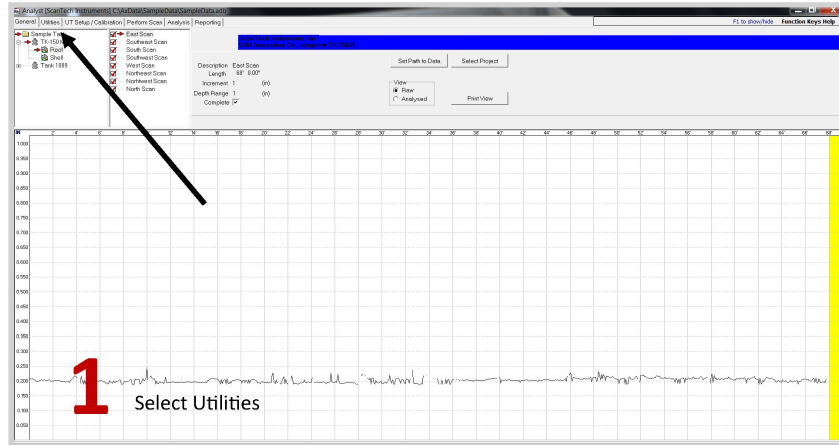
Tank setup chart X2

After you insert the Analyst key, the Analyst icon will appear by the time in the task tray. Right click Analyst X and select install, follow the install steps. Then right click Anylsy X icon and select start Analyst X.

Tank System Quick Start

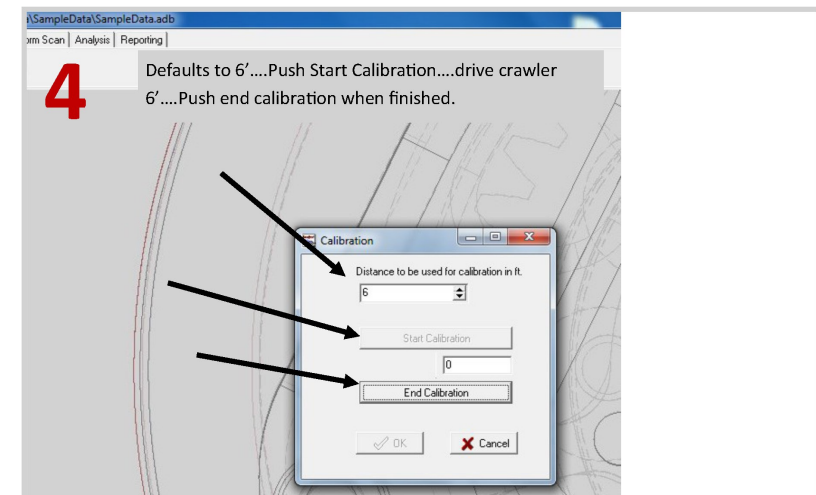
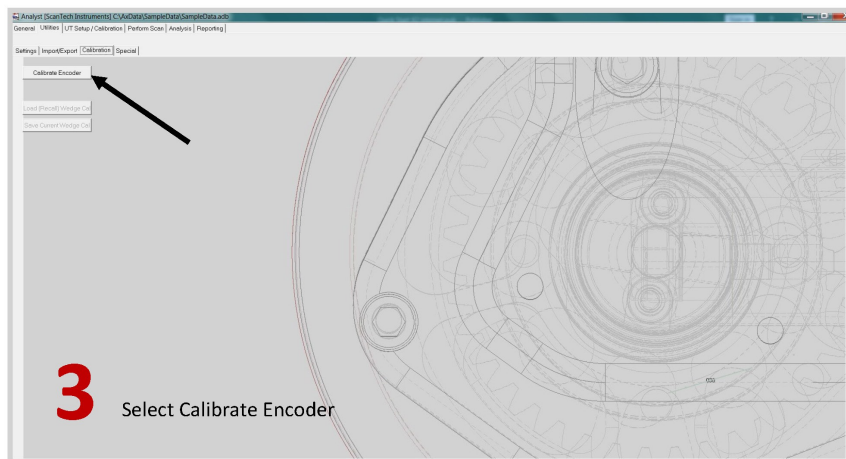
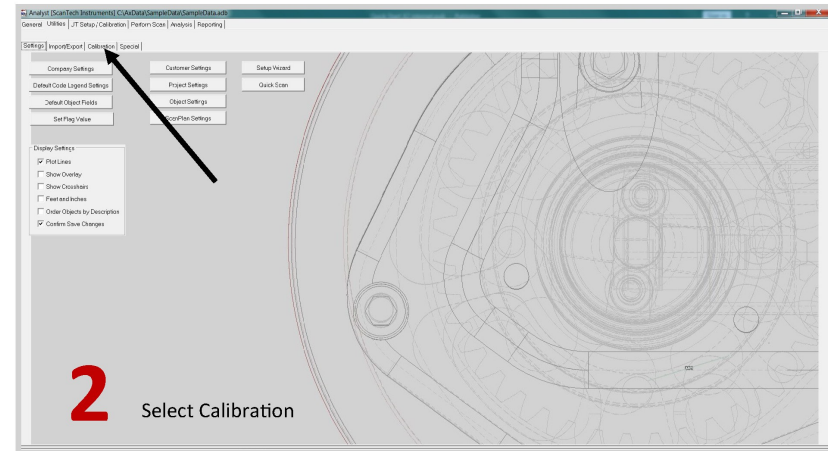
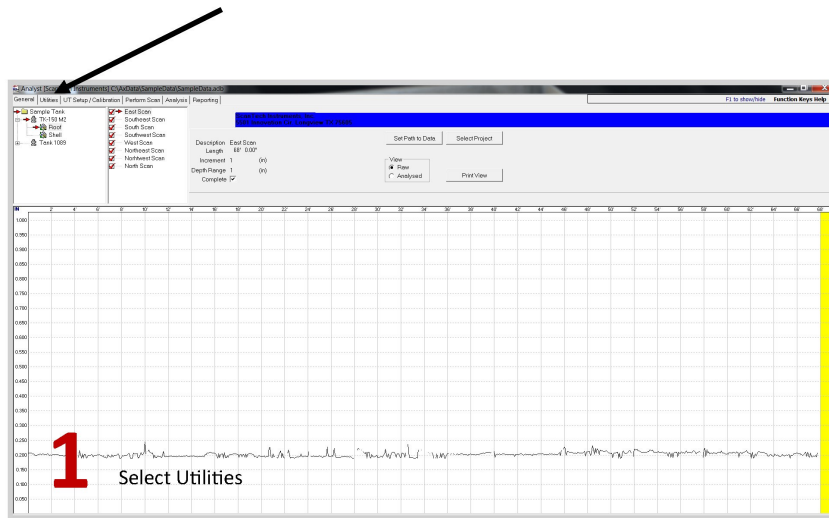
Setting up a scan

This information is not meant to replace full setup.
This quick start was made to set up scans quickly to
use the system. Full training is recommended.

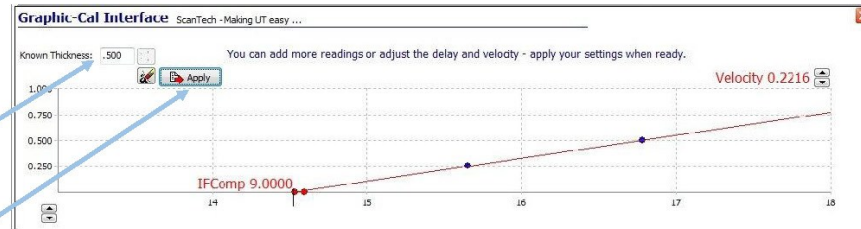
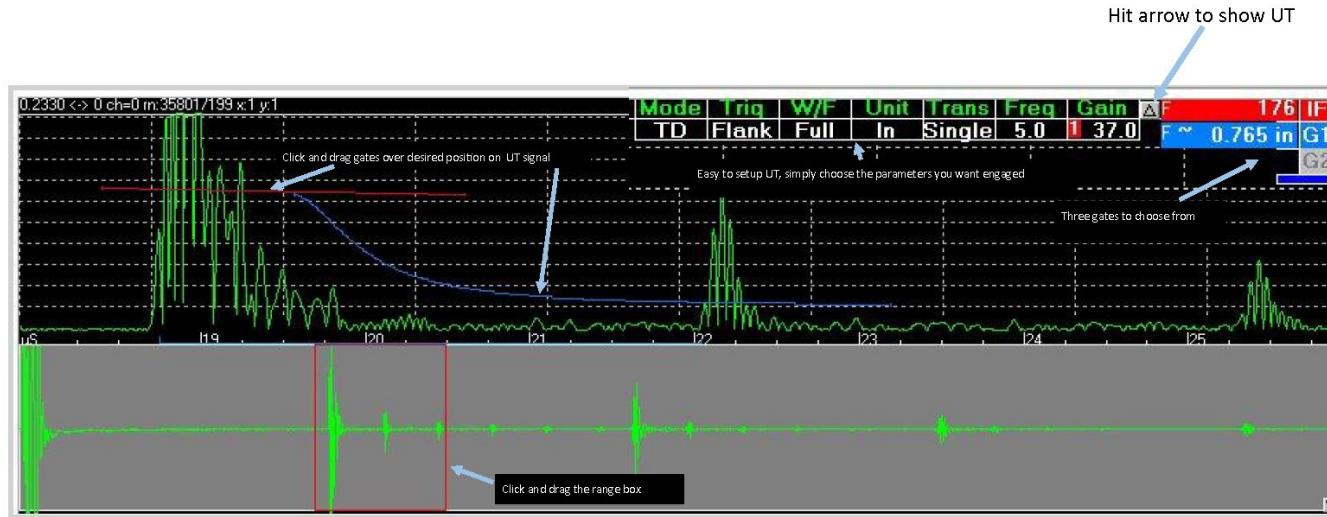


Tank System Quick Start

Calibrating the encoder



Calibrate UT



Insert the thickness of the cal step hit apply, then move transducer to another step, repeat for various points



Blank Page. Now Ready to Scan.

