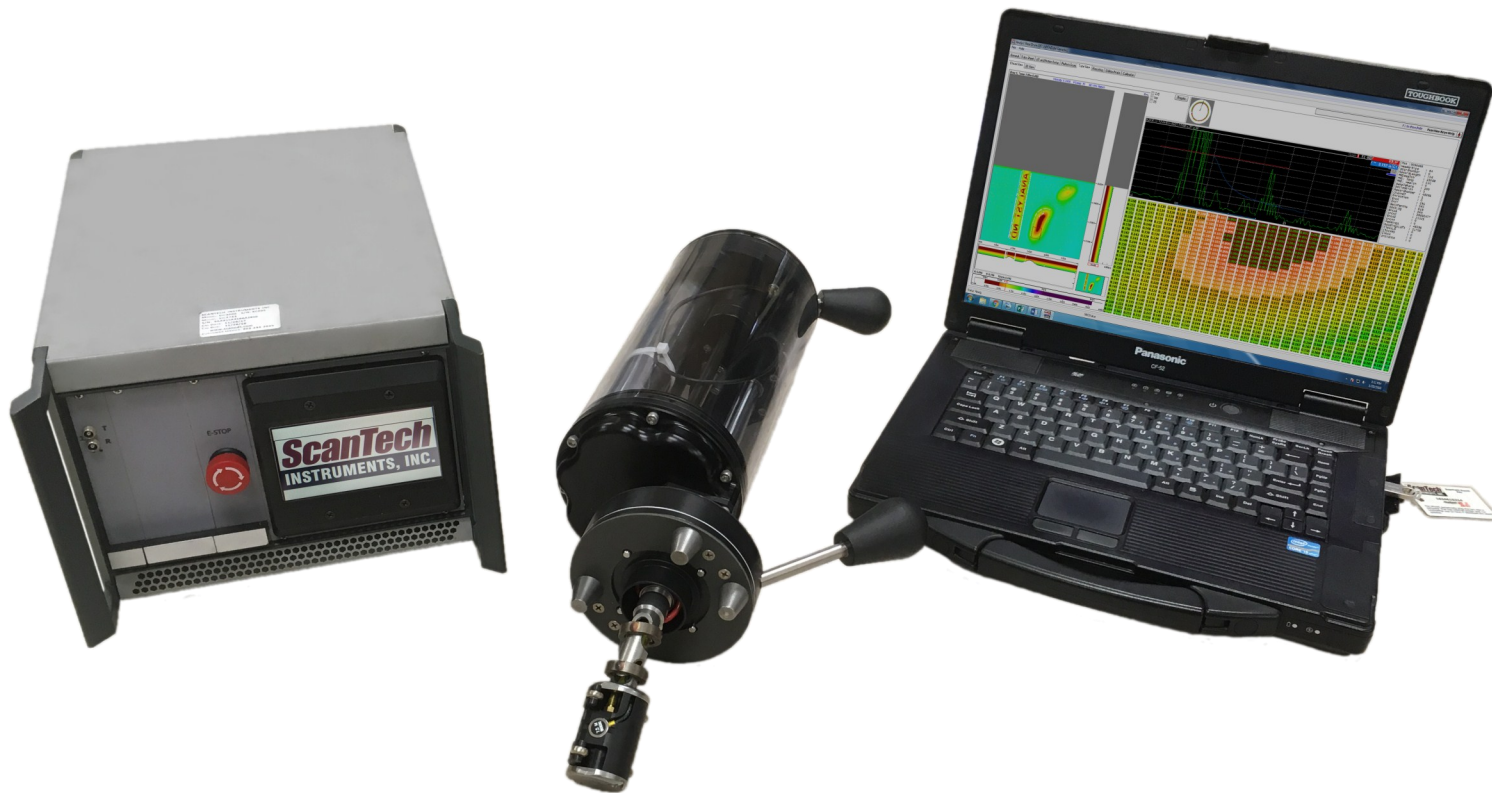


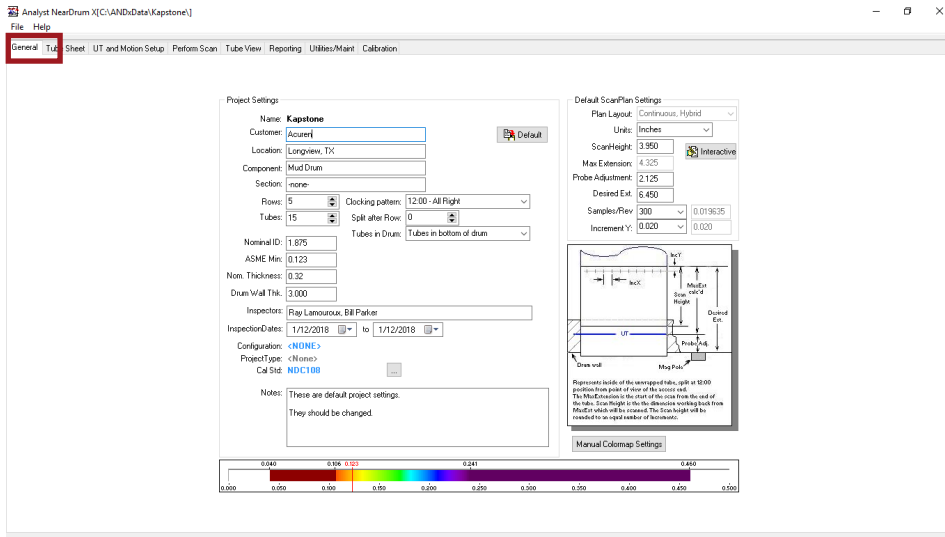


sales@scanndt.com
www.scanndt.com
Phone: (903) 234-2025
Fax: (903) 234-2033

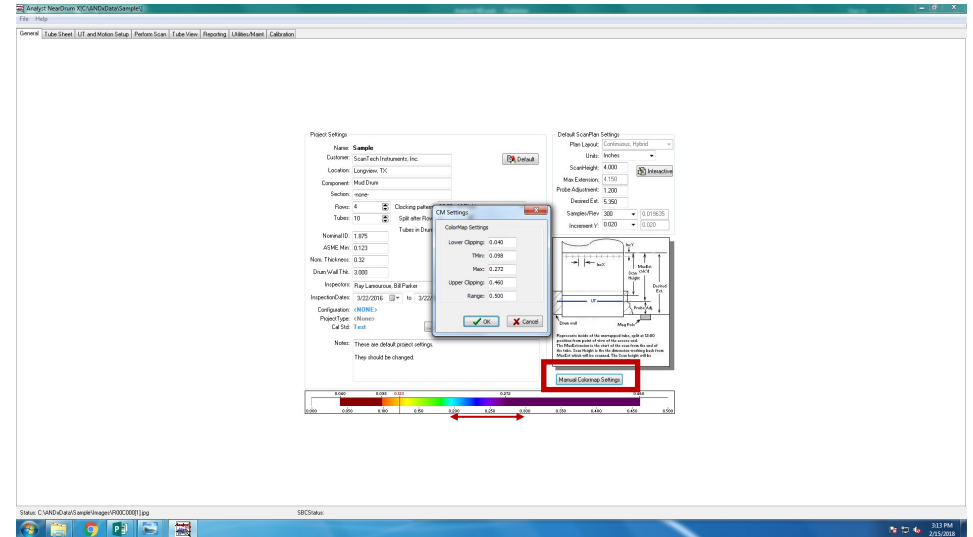
Analyst NDX[™]

Quick Start Guide for *Analyst NDX*[™] Software

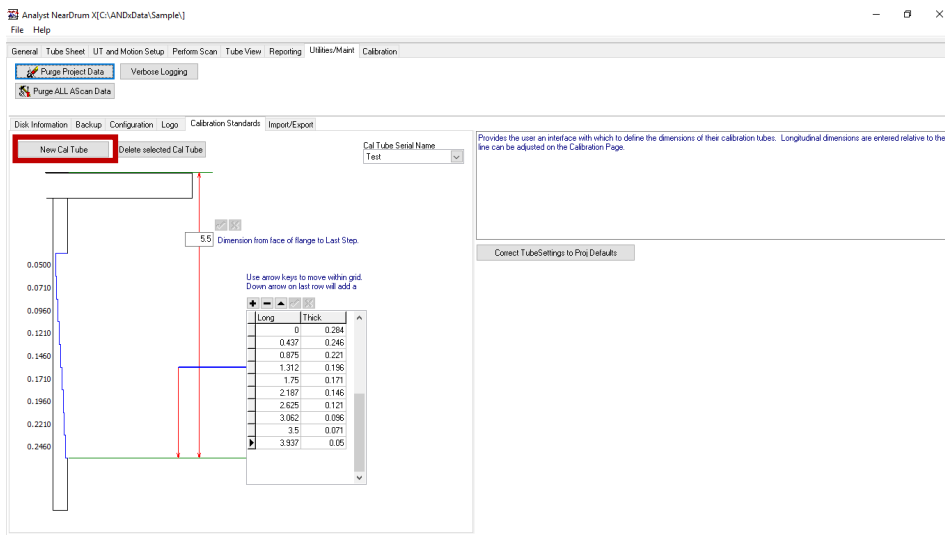




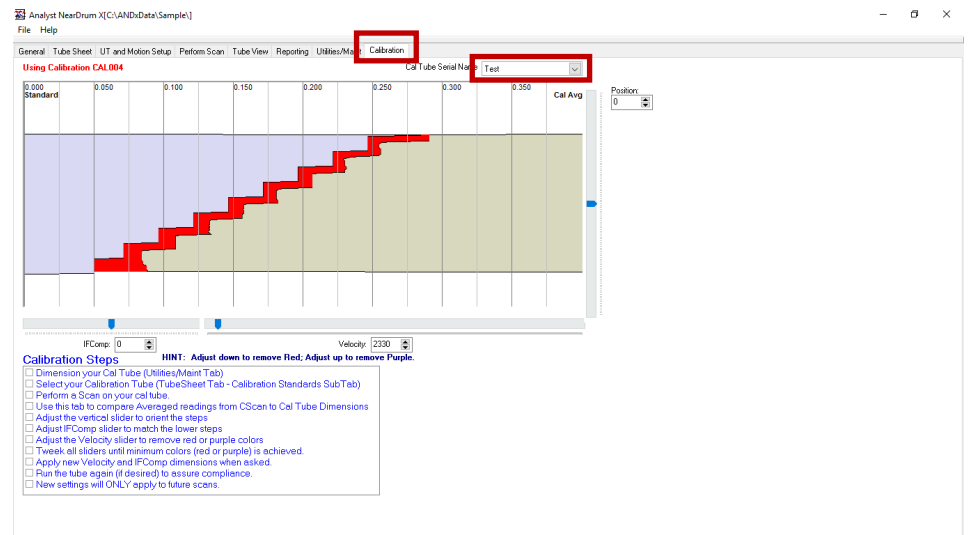
1 Begin on the “General” tab. Fill in the information about your scan including the customer information, number of rows and tubes, nominal inner diameter, and additional scan settings.



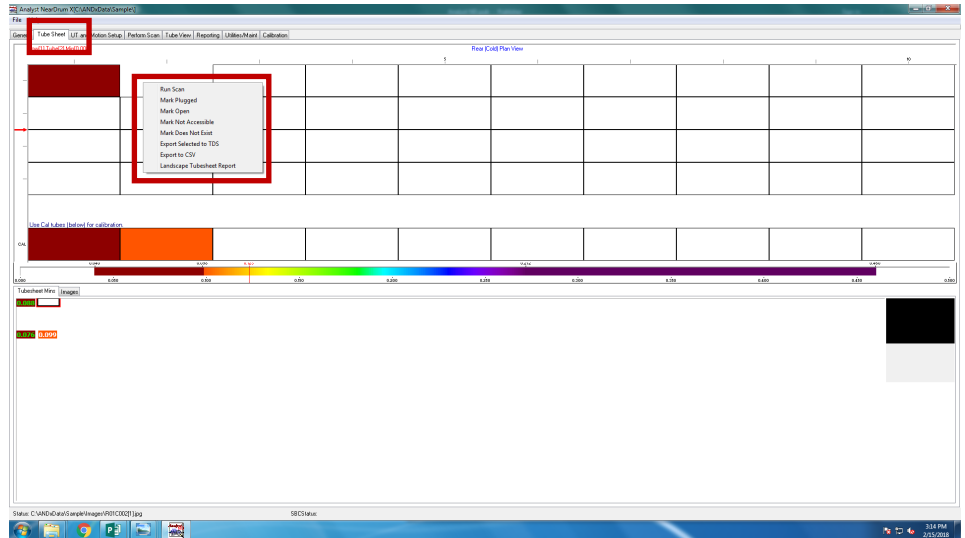
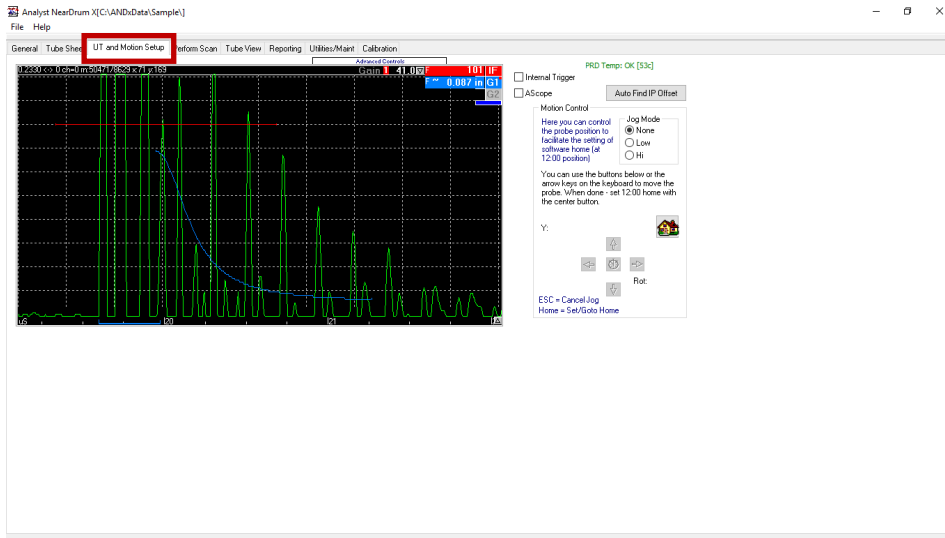
2 Optional: Edit the color map settings by clicking and dragging the colors or manually input the values by clicking the button “Manual Colormap Settings”.



3 Move to the “Utilities/Maint” tab. Create a “New Cal Tube” and add a name for the “Cal Tube Serial Name”. Input the thicknesses and distances of the calibration tube in the chart.

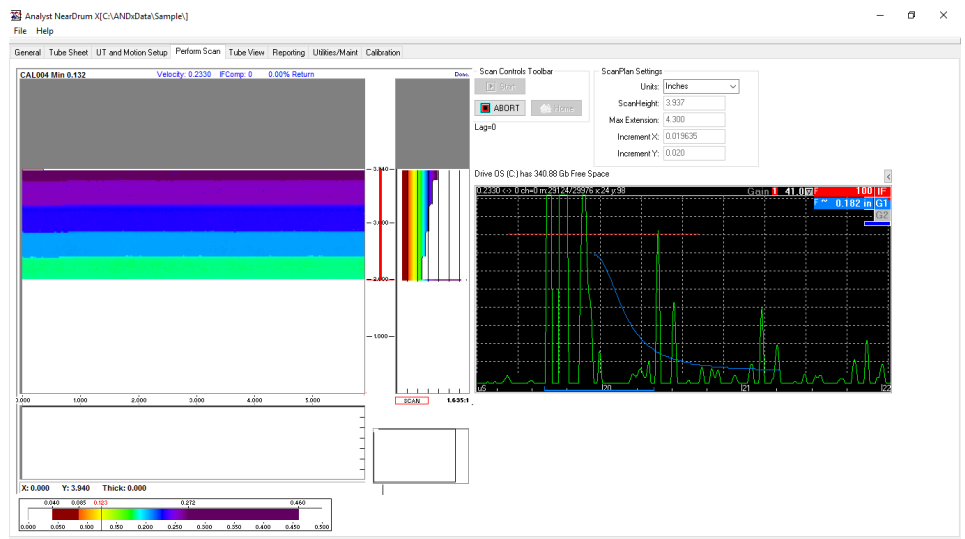
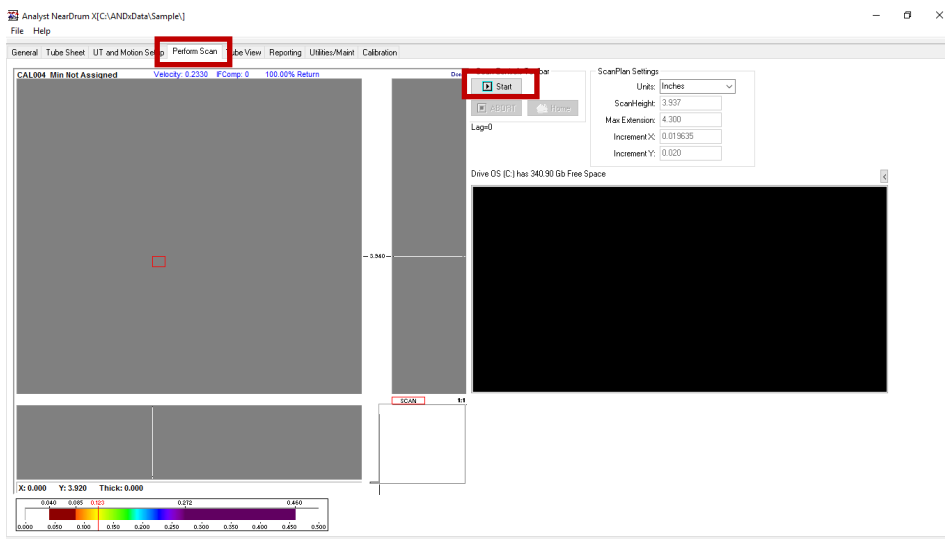


4 Move to the “Calibrate” tab. Select the calibration tube serial name from the drop down listing. Using the calibration tube, follow the steps given at the bottom of the page to calibrate the scanner.



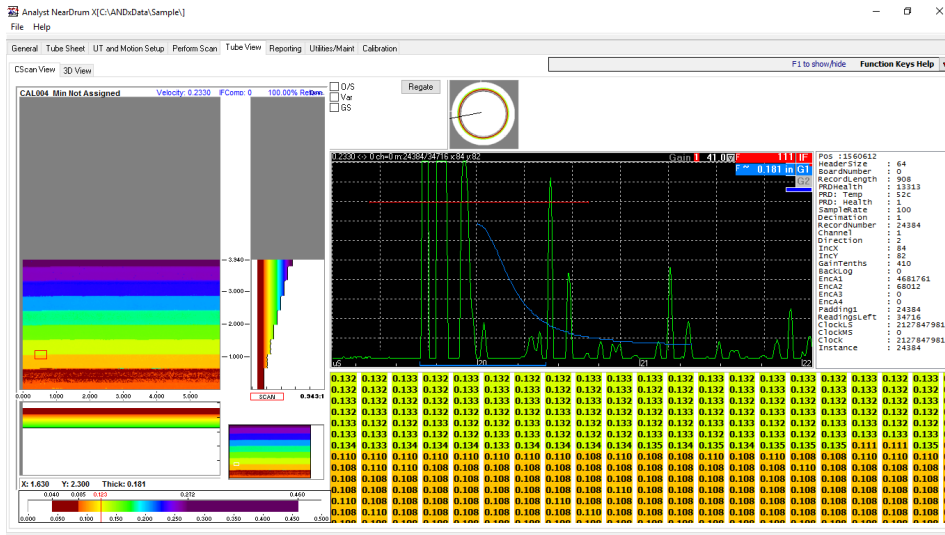
5 Move to the “UT and Motion Setup” tab. You can set the home position and auto find the IP offset.

6 Move to the “Tube Sheet” tab. Right-click on the selected tube and choose whether to run the scan or mark it.

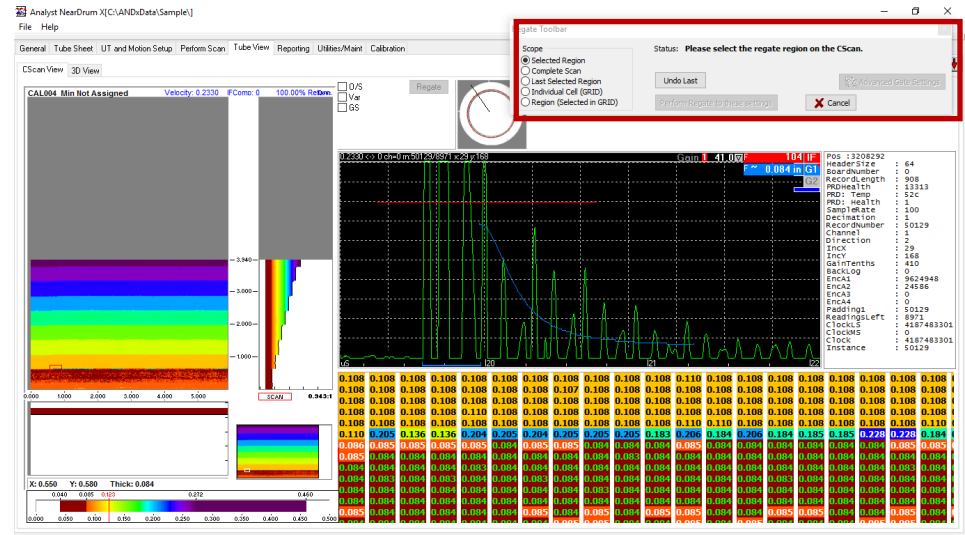


7 By clicking “Run Scan” on the tube sheet, it will automatically switch to the “Perform Scan” tab. Click the “start” button to begin the scan. Should you need to stop the scan, you can click “abort”.

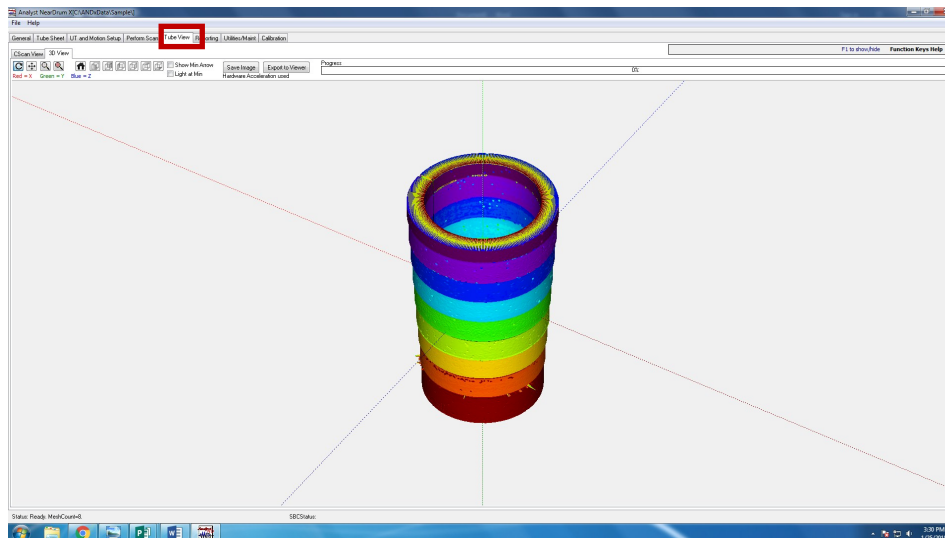
8 You can watch the scan in real-time and make adjustments to the gain as necessary.



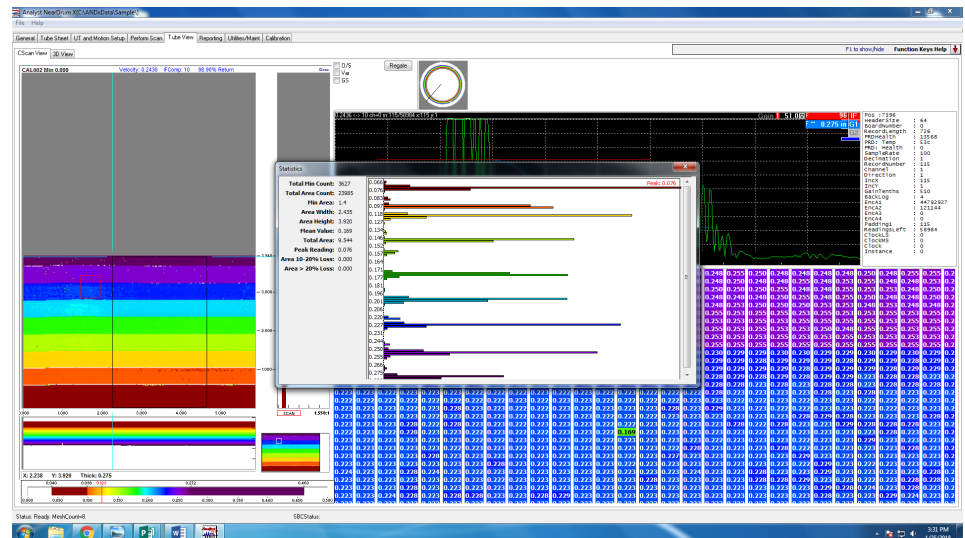
9 Next move to the “Tube View” tab. On this tab, you can re-gate the data, adjust the colormap, or see a 3D view of the tube.



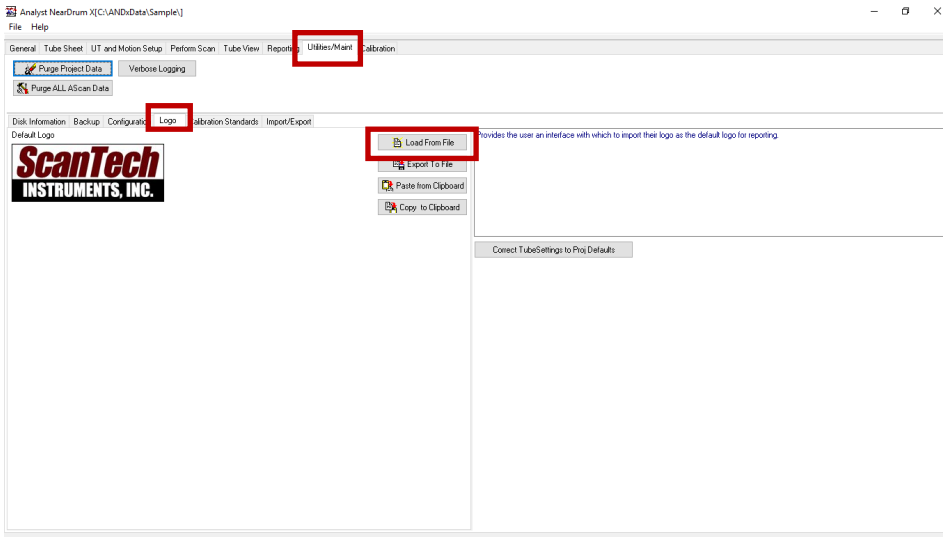
10 Optional: To re-gate the data, click the “Regate” button in the top right corner. Select which region to re-gate, move the gate to the new position, and click “perform regate to these settings”.



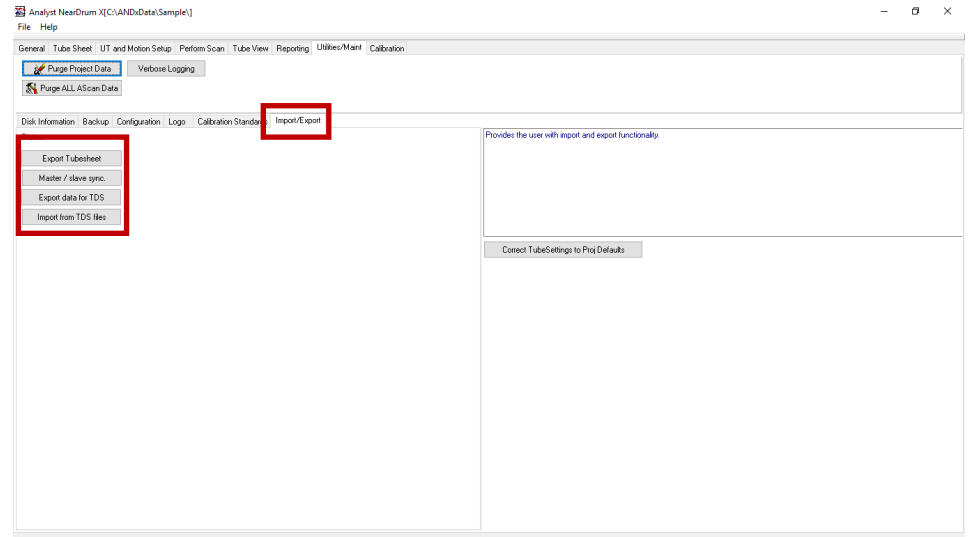
11 Optional: Move to the 3D view of the tube. You have the option to save a picture of the tube or export the data to an external viewer.



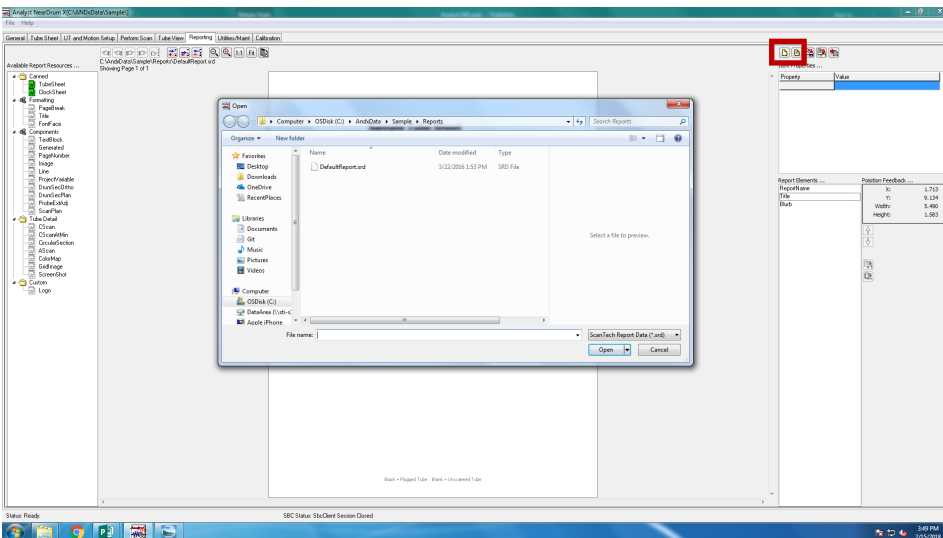
12 Optional: To view a histogram of a selected region, click and drag a box across the C-scan.



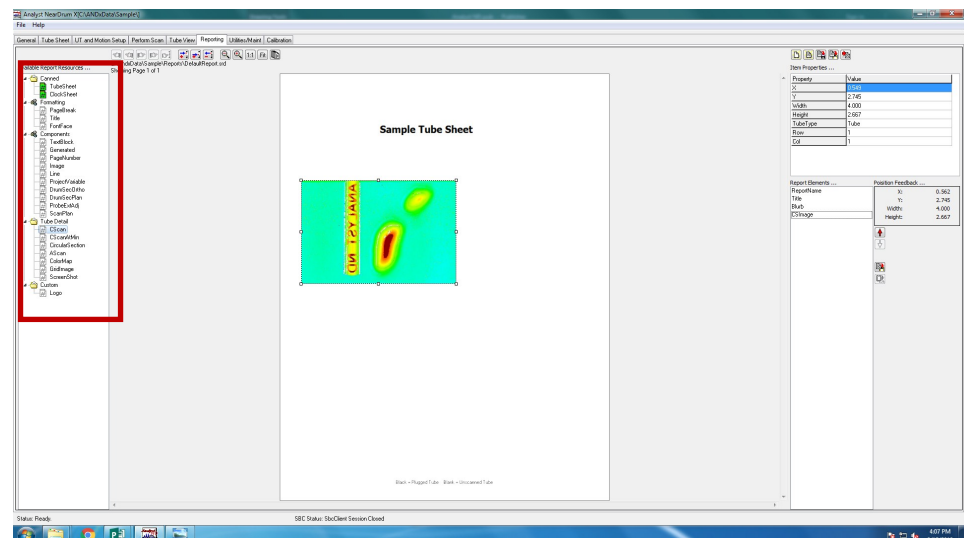
13 Optional: To update your company's logo, move to the "Utilities/Maint" tab and click the sub-tab "Logo". Load the logo from a file or paste it from the clipboard.



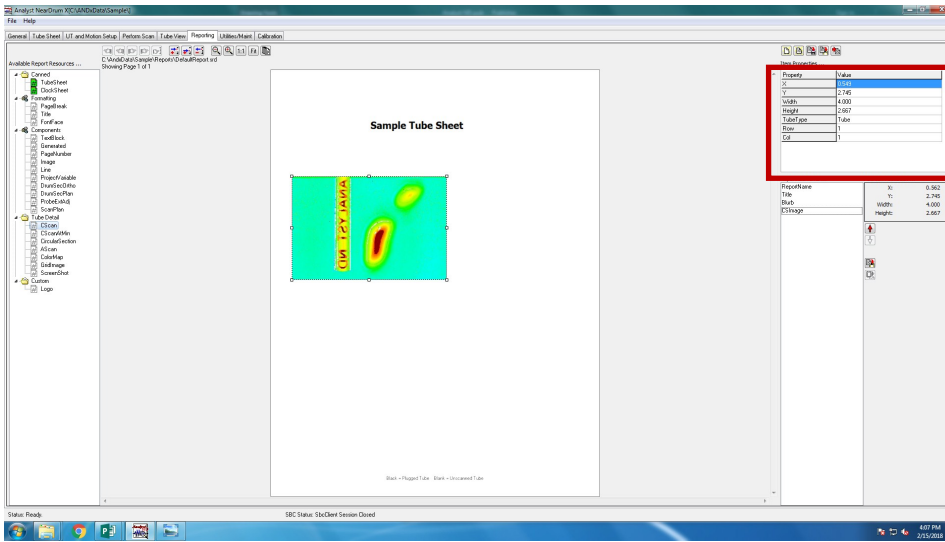
14 Optional: To export the tubesheet data, sync up multiple systems, or import or export tube data structure information, move to the sub-tab "Import/Export".



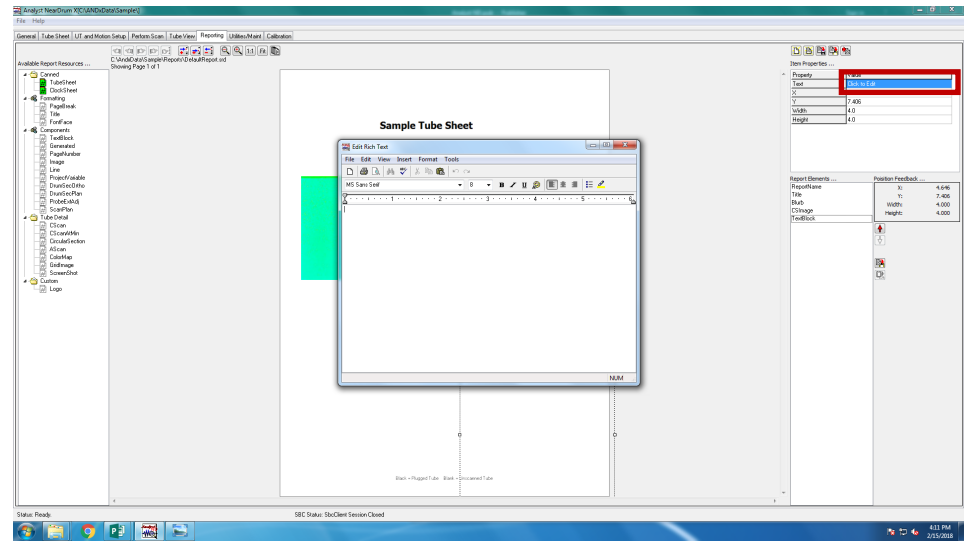
15 To create a report, move to the "Reporting" tab. Select a blank document or a template.



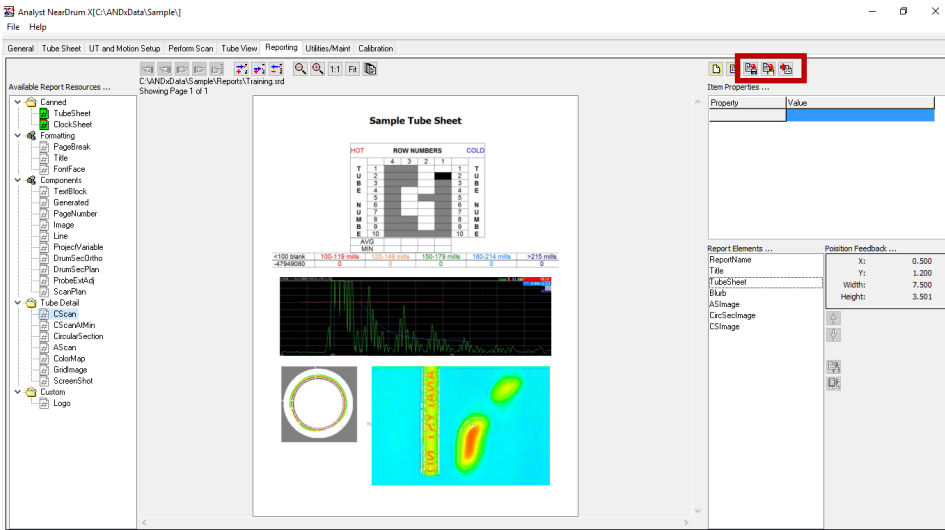
16 Select an object from the left side of the screen and click and drag the object onto the report.



17 Modify the properties of the object by editing the values in the table.



18 To edit a text block, select the cell in the properties table that says "click to edit". This will bring up a text editor where you can edit the text, font, size, and color.



19 Once you are finished customizing the report, you can save and export the report.

Data Acquisition: Function keys

Key	Function
F1	Show/hide listing of function keys
F2	Re-gate data
F3	Save custom (named) image
F4	Find next min. point
Ctrl F4	Back through min. points
F5	Toggle C-scan full width
F6	Toggle AmpBS/Grid
Ctrl F6	Toggle ABS/ADS
F7	Use gate settings for UT setup
F8	Move to position
F9	Set min and save images
F10	Crosshair to min position
F11	Toggle play/stop
F12	Locate min area

Key	Function
End	Fits C-Scan to window
Home	Scale of C-Scan 1:1
Ctrl Home	Zoom C-Scan to fit grid dimension
Page Up	Zoom in
Page Down	Zoom out
Arrow Keys	Move cross-hairs on C-Scan image
Ctrl Arrow Keys	Scroll window when zoomed in
Alt Arrow Keys	Scroll grid (red) box